




Mau nikah...?! Eits..cari tahu dulu..

Panduan Persiapan Gizi dan Kesehatan PRA-NIKAH bagi Calon Pengantin Wanita



PANDUAN PERSIAPAN GIZI DAN KESEHATAN PRANIKAH BAGI CALON PENGANTIN WANITA

Tim Penyusun :

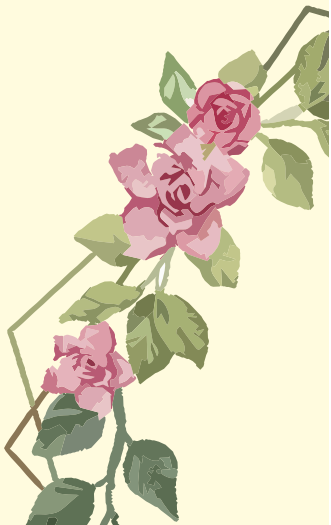
Yhona Paratmanitya, S.Gz, Dietisien, MPH
Siti Nurunnayah, S.ST, M.Kes
Susiana Sariyati, S.ST, M.Kes

Konsultan Ahli :

Prof. dr. Hamam Hadi, MS., Sc.D, Sp.GK
Prof. Dra. Yayi Suryo Prabandari, Psi., M.Psi
dr. Detty Siti Nurdianti, MPH, Ph.D, Sp.OG (K)
Dr. Toto Sudargo, SKM, M.Kes
Dr. Siti Helmyati, DCN, M.Kes

Desain & Layout :

Winda Irwanti, S.Gz, MPH





PENDAHULUAN

Buku “Panduan Persiapan Gizi dan Kesehatan Pra-Nikah Bagi Calon Pengantin Wanita” ini memuat berbagai macam informasi terkait hal-hal yang harus disiapkan menuju kehamilan yang sehat.

Meskipun ditujukan secara khusus bagi calon pengantin wanita sebagai calon ibu, panduan ini juga dianjurkan untuk dibaca oleh calon suami sebagai calon ayah agar dapat bersama-sama mempersiapkan kehamilan yang sehat demi kesempurnaan tumbuh-kembang calon buah hati tercinta.

Apabila terdapat informasi yang kurang dapat dipahami maka mintalah penjelasan lebih lanjut kepada konselor pendamping Anda.

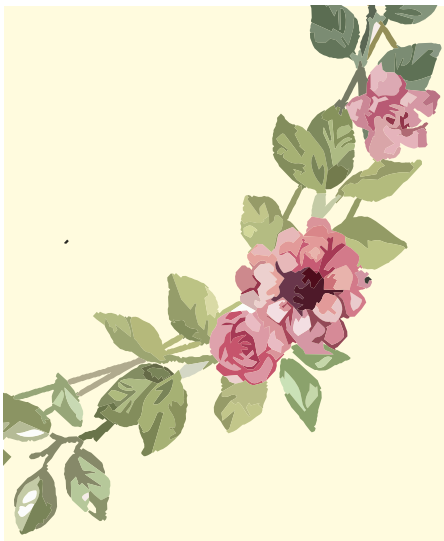
Ttd.
Penyusun

REFERENSI

- Allen, L. H. (2000) 'Anemia and iron deficiency: effects on pregnancy outcome 1 - 3', *The American of Clinical Nutrition*, 71, pp. 1280-1284.
- Almatsier, S. (2009) *Prinsip Dasar Ilmu Gizi*. Jakarta: PT Gramedia Pustaka Utama
- Auges, M. (2016) 'Assessment of iron deficiency and anemia in pregnant women : an observational French study', 12, pp. 95-102.
- Biermann, J., Lang, A., Carol, D., Dubin, C. and Brann, A. (2006) 'Promising Practices in Preconception Care for Women at Risk for Poor Health and Pregnancy Outcomes', pp. 21-28. doi: 10.1007/s10995-006-0097-8.
- Bovet, P. (2005) 'Association between maternal smoking and low birth weight in Switzerland: The EDEN study Association between maternal smoking and low birth weight in Switzerland:the EDEN study', (October 2015), pp. 525-531.
- Colman, K And Pavord, S. (2017) *Iron Deficiency Anaemia In Pregnancy Information For Patients*. Oxford University Hospitals NHS Foundation Trust. <https://www.ouh.nhs.uk/patient-guide/leaflets/files/14412/Panaemia.pdf>
- De-Regil, L., Pena-Rosas, J., Fernandez-Gaxiola, A. and Rayco-Solon, P. (2014) 'Effects and safety of periconceptional folate supplementation for preventing birth defects (Review)', *Cochrane Database of Systematic Reviews*, 35(12), pp. 1-254. doi: 10.1002/14651858.CD007950.pub3. www.cochranelibrary.com.
- Dean, S. V, Imam, A. M., Lassi, Z. S. and Bhutta, Z. a (2012) 'Systematic Review of Preconception Risks and Interventions'. Available at: https://globalmotherchildresearch.tghn.org/site_media/media/articles/Preconception_Report.pdf.
- Dean, S. V, Lassi, Z. S., Imam, A. M. and Bhutta, Z. A. (2014) 'Preconception care: nutritional risks and interventions.', *Reproductive health*, 11 Suppl 3(Suppl 3), p. S3. doi: 10.1186/1742-4755-11-S3-S3.
- Dunlop, A. L., Jack, B. W., Bottalico, J. N., Lu, M. C., James, A., Shellhaas, C. S., Hallstrom, L. H. K., Solomon, B. D., Feero, W. G., Menard, M. K. and Prasad, M. R. (2008) 'The clinical content of preconception care: women with chronic medical conditions', *American Journal of Obstetrics and Gynecology*, 199(6 SUPPL. B). doi: 10.1016/j.ajog.2008.08.031.
- Elsinga, J., de Jong-Potjer, L. C., van der Pal-de Bruin, K. M., le Cessie, S., Assendelft, W. J. J. and Buitendijk, S. E. (2008) 'The Effect of Preconception Counselling on Lifestyle and Other Behaviour Before and During Pregnancy', *Women's Health Issues*, 18(6 SUPPL.). doi: 10.1016/j.whi.2008.09.003.
- Frayne, D. J., Verbiest, S., Chelmos, D., Clarke, H., Dunlop, A., Hosmer, J., Menard, M. K., Moos, M., Ramos, D., Stuebe, A. and Zephyrin, L. (2016) 'Health Care System Measures to Advance Preconception Wellness Consensus Recommendations of the Clinical Workgroup of the', 127(5), pp. 863-872. doi: 10.1097/AOG.0000000000001379.
- Glanz, K., Rimer, B. K. and Viswanath, K. (2008) *Health Behavior and Health Education. Theory, Research, and Practice*. Fourth Edi. California: Jossey-Bass.
- Godfrey, K. M., Cutfield, W., Chan, S. Y., Baker, P. N., Chong, Y. S., Aris, I. B. M., dkk. (2017) 'Nutritional Intervention Preconception and During Pregnancy to Maintain Healthy Glucose Metabolism and Offspring Health ("NiPPeR"): Study protocol for a randomised controlled trial *Trials*. *Trials*, 18(1), pp. 1-12. doi: 10.1186/s13063-017-1875-x.
- Gonzalez-casanova, I., Young, M. F., Nguyen, P. H., Gonzalez-casanova, I., Young, M. F., Truong, T. V. and Hoang, H. (2017) 'Preconception Micronutrient Supplementation with Iron and Folic Acid Compared with Folic Acid Alone Affects Linear Growth and Fine Motor Development', (July). doi: 10.3945/jn.117.250597.
- Harris, R,S dan Karmas. E. 1989. *Evaluasi Gizi Pada Pengolahan Pangan*, Penerbit ITB Bandung.
- Hidayati, M., Hadi, H. and Susilo, J. (2005) 'Kurang Energi Kronis dan Anemia Ibu Hamil Sebagai Faktor Risiko Kejadian Berat Bayi Lahir Rendah di Kota Mataram Propinsi Nusa Tenggara Barat', *Sains Kesehatan*, 18(4), pp. 483-491.

- Kemenkes RI (2013). Buku Saku Pelayanan Kesehatan Ibu Di Fasilitas Kesehatan Dasar Dan Rujukan Pedoman Bagi Tenaga Kesehatan. <http://www.searo.who.int/indonesia/documents/976-602-235-265-5-buku-saku-pelayanan-kesehatan-ibu.pdf?ua=1>
- Kemenkes RI (2018a) 'KUALITAS MANUSIA DITENTUKAN PADA 1000 HARI PERTAMA KEHIDUPANNYA', (Imd), pp. 1-2.
- Kemenkes RI (2018b) 'Penuhi kebutuhan gizi pada 1000 hari pertama kehidupan', pp. 2-3.
- Kim, M. H., (2008) 'Associate Editors Contents A D V I S O R Y women with chronic medical conditions psychiatric conditions', (December).
- Kozuki, N., Lee, A. C. and Katz, J. (2012) 'Moderate to Severe , but Not Mild , Maternal Anemia Is Associated with Increased Risk of', pp. 358-362. doi: 10.3945/jn.111.149237. There.
- Lee, A. C., Kozuki, N., Cousens, S., Stevens, G. A., Blencowe, H., Silveira, M. F., dkk. (2017) 'Estimates of burden and consequences of infants born small for gestational age in low and middle income countries with INTERGROWTH-21 st standard: analysis of CHERG datasets', *Bmj*, 4229, p. j3677. doi: 10.1136/bmj.j3677.
- Mihaila, C., Schramm, J., Strathmann, F. G., Lee, D. L., Gelein, R. M. and Anne, E. (2011) 'Identifying a Window of Vulnerability during Fetal Development in a Maternal Iron Restriction Model', 6(3). doi: 10.1371/journal.pone.0017483.
- Milman, N. (2011) 'Anemia — still a major health problem in many parts of the world !', pp. 369-377. doi: 10.1007/s00277-010-1144-5.
- Morof, D., Steinauer, J., Haider, S., Liu, S., Darney, P. and Barrett, G. (2012) 'Evaluation of the London Measure of Unplanned pregnancy in a United States population of women', *PLoS ONE*, 7(4), pp. 1-7. doi: 10.1371/journal.pone.0035381.
- National Heart, Lung and Blood Institute. 2000. *The Practical Guide. Identification, Evaluation, and Treatment of Overweight and Obesity in Adults*. US: National Institute of Health
- Nguyen, P. H., Young, M., Gonzalez-Casanova, I., Pham, H. Q., Nguyen, H., Truong, T. V., Nguyen, S. V., Harding, K. B., Reinhart, G. A., Martorell, R. and Ramakrishnan, U. (2016) 'Impact of preconception micronutrient supplementation on anemia and iron status during pregnancy and postpartum: A randomized controlled trial in Rural Vietnam', *PLoS ONE*, 11(12), pp. 1-16. doi: 10.1371/journal.pone.0167416.
- Nisar, Y. Bin and Dibley, M. J. (2014) 'Earlier Initiation and Use of a Greater Number of Iron-Folic Acid Supplements during Pregnancy Prevents Early Neonatal Deaths in Nepal and Pakistan', 9(11). doi: 10.1371/journal.pone.0112446.
- Mansjoer, Arif, dkk, (2008), *Kapita Selektta Kedokteran*, Jakarta : Media Aesculapius
- Ramakrishnan, U., Grant, F., Goldenberg, T., Zongrone, A. and Martorell, R. (2012) 'Effect of Women ' s Nutrition before and during Early Pregnancy on Maternal and Infant Outcomes : A Systematic Review', 26, pp. 285-301. doi: 10.1111/j.1365-3016.2012.01281.x.
- Ramakrishnan, U. and Imhoff-kunsch, B. (2008) 'Anemia and Iron Deficiency in Developing Countries', in Lammi-Keefe, C. J., Couch, S. C., and Philipson, E. H. (eds) *Nutrition and Health: Handbook of Nutrition and Pregnancy*. Humana Press.
- Robbins, L., Zapata, B., Farr, L., Kroelinger, D., Morrow, B., Ahluwalia, I., D'Angelo, V., Barradas, D., Cox, S., Goodman, D., Williams, L., Grigorescu, V., Barfield, D. and Centers (CDC), (.C.D.C.). (2014) 'Core state preconception health indicators - pregnancy risk assessment monitoring system and behavioral risk factor surveillance system, 2009.', *Morbidity and mortality weekly report. Surveillance summaries (Washington, D.C. : 2002)*, 63(3), p. 1.
- Sanghvi, T. G., Harvey, P. W. J. and Wainwright, E. (2010) 'Maternal iron - folic acid supplementation programs: Evidence of impact and implementation', 31(8), pp. 100-107.
- Steer, C. D., Bolton, P. and Golding, J. (2015) 'Preconception and prenatal environmental factors associated with communication impairments in 9 Year old children using an exposome-wide approach', *PLoS ONE*, 10(3), pp. 1-26. doi: 10.1371/journal.pone.0118701.
- Stopler & Weiner. (2017) *Medical Nutrition Therapy for Anemia*. In: Mahan & Raymonds (Eds). *Krause's Food and The Nutrition Care Process*. 14th edition. St. Louis, Missouri: Elsevier
- Susiloningtyas. (2012) *Pemberian Zat Besi (Fe) dalam Kehamilan*. *Majalah Ilmiah Sultan Agung Vol 50, No 128*
- Suega, K., Bakta, I. M., Andyana, L. and Darmayuda, T. (2007) 'PERBANDINGAN BEBERAPA METODE DIAGNOSIS ANEMIA DEFISIENSI BESI: usaha mencari cara diagnosis yang tepat untuk penggunaan klinik', 8 Nomor 1(19), pp. 1-12.

- Tangkilisan, HA., dan Debby, R. 2002. Defisiensi Asam Folat. *Sari Pediatri*, Vol. 4, No. 1
- US Department of Health and Human Services. (2003) The Seventh Report of the Joint National Committee in Prevention, Detection, Evaluation and Treatment of High Blood Pressure available at www.nhlbi.nih.gov/files/docs/guidelines/jnc7full.pdf
- Villar, J., Meriardi, M., Gulmezoglu, A. M., Abalos, E., Carroli, G., Kulier, R. and Onis, M. de (2003) 'Nutritional interventions during pregnancy for the prevention or treatment of maternal morbidity and preterm delivery: an overview of randomized controlled trials.', *Journal of Nutrition*, 133(5, Supplement2), p. 1606S-1625S.
- Wijaya-Erhardt, M., Muslimatun, S. and Erhardt, J. G. (2013) 'Effect of an educational intervention related to health and nutrition on pregnant women in the villages of Central Java Province, Indonesia', *Health Education Journal*, (October), p. 0017896913485741. doi: 10.1177/0017896913485741.
- Williams, L., Zapata, L. B., D'Angelo, D. V., Harrison, L. and Morrow, B. (2011) 'Associations Between Preconception Counseling and Maternal', *Maternal and Child Health Journal*, (October). doi: 10.1007/s10995-011-0932-4.
- Winkvist, A., Nurdiati, D. S., Stenlund, H. and Hakimi, M. (2017) 'Predicting under- and overnutrition among women of reproductive age : a population-based study in central Java , Indonesia', 3(2).
- World Health Organization (2000). Redefining obesity and it's treatment available at <http://www.wpro.who.int/nutrition/documents/docs/Redefiningobesity.pdf>
- World Health Organization (2016) 'WHO Recommendation on Antenatal care for positive pregnancy experience', WHO Recommendation on Antenatal care for positive pregnancy experience, p. 152. doi: ISBN 978 92 4 154991 2.
- Yuliandi R, 2016. Anemia Pada Ibu Hamil: Penurunan Hb Pada Masa Kehamilan. <http://www.sainsphd.com/2016/12/anemia-pada-ibu-hamil.html>



ISBN 978-623-223-042-2

